

Recombinant human betacellulin (Qk123)



Type: Stem cells

Available for purchase: unit size (µg): 25, 50, 100, 500, 1000

Buy online with secure credit card or purchase order.

[View this product and buy online](#)

Product Information

Betacellulin is a member of the [epidermal growth factor \(EGF\) family](#) which regulates proliferation and differentiation in various stem cell types. Betacellulin stimulates proliferation and maintains pluripotency in neural and osteogenic stem cells. It can induce pancreatic β -cell differentiation in human embryonic stem cells (ESC) and differentiation of retinal progenitor cells.

Qkine human betacellulin is a highly pure and bioactive 9.89 kDa protein, [animal origin-free](#) (AOF), carrier-free, tag-free, and non-glycosylated to ensure its purity with exceptional lot-to-lot consistency.

This protein is also available as GMP compliant [Cell Therapy Grade](#), to enquire email ryan.weber@matriq.com.

Alternative protein names

BTC, Probetacellulin

Molecular weight

9.89 kDa

Protein Uniprot number

High purity human betacellulin (UniProt: P35070)

Species reactivity

- human

- species similarity:
- mouse - 78%
- rat - 75%
- bovine - 90%
- porcine - 86%

Product Information

- >98%, by SDS-PAGE quantitative densitometry
- Expressed in *E. coli*
- Animal origin-free (AOF) and carrier protein-free
- Manufactured in our Cambridge, UK laboratories
- Lyophilized from acetonitrile

Reconstitution instructions

- Resuspend in 10 mM HCl (Reconstitution solution A) at >50 µg/ml

Featured applications

- Cellular proliferation, migration and survival
- Stimulation of angiogenesis and vascular network development
- Neurogenesis and neural differentiation
- Differentiation of retinal progenitor cells

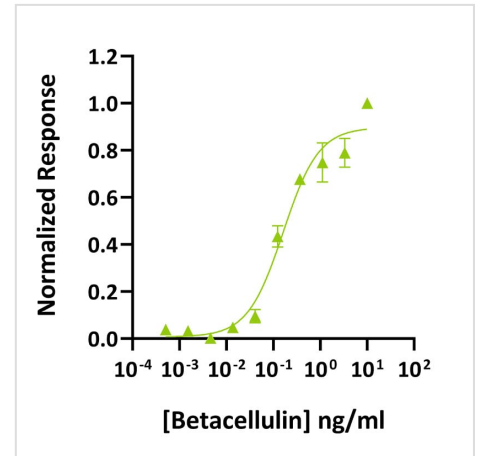
Further quality assays

- Mass spectrometry: single species with expected mass
- Recovery from stock vial: >95%
- Endotoxin: <0.05 EU/µg protein

Scientific Information

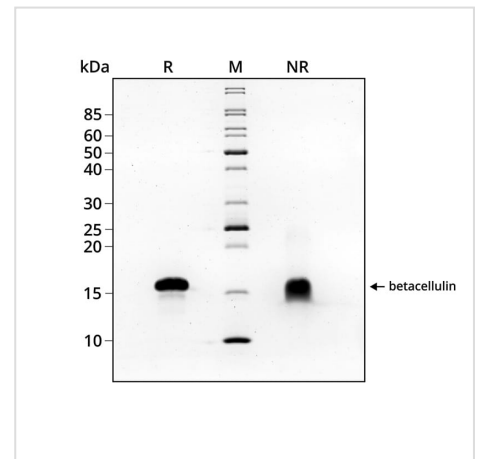
Bioactivity

Recombinant betacellulin activity was determined using a luciferase assay. HEK293T cells were treated in triplicate with a serial dilution of betacellulin for 3 hours. Firefly activity was measured and normalized to the control Renilla luciferase activity. Data from Qk123 lot #204720. EC50 = 162.4 pg/ml.



Purity

Recombinant betacellulin migrates as a major band at approximately 15 kDa (monomer) in reduced (R) and non-reduced (NR) conditions. No contaminating protein bands are present. The purified recombinant protein 3 µg was resolved using 15% w/v SDS-PAGE in reduced (+β-mercaptoethanol, R) and non-reduced (NR) conditions and stained with Coomassie Brilliant Blue R250. Data from Qk123 lot #204740.



Original product page: <https://ryan.calliope-alpha.ts.net/product/recombinant-human-betacellulin-qk123/>

PDF generated: 12 May 2026

Copyright © 2026 by Qkine Ltd. All rights reserved including graphics and images.