

Recombinant human IGF-1 protein (Qk047)



Type: Stem cells

Available for purchase: Unit Size (µg): 25, 50, 100, 500, 1000

Buy online with secure credit card or purchase order.

[View this product and buy online](#)

Product Information

Human insulin-like growth factor 1 (IGF-1) protein is used in the maintenance of [human pluripotent stem cells](#) (iPSC) and is necessary for cell growth in the absence of insulin. IGF-1 promotes the proliferation of many cell types, including embryonic stem cells (ESC) and mesenchymal stem cells (MSC).

Qkine IGF-1 is a highly pure and bioactive 8 kDa protein, Qkine growth factors are [animal origin-free](#) (AOF) and carrier-protein free (CF) for consistent stem cell culture.

This protein is also available as GMP compliant [Cell Therapy Grade](#), to enquire email ryan.weber@matriq.com.

Alternative protein names

Insulin-like Growth Factor-I, Somatamedin-C, Mechano Growth Factor (MGF), IGF1, IGF 1, Qk47

Molecular weight

8 kDa

Protein Uniprot number

High purity human IGF-1 protein (Uniprot:P05019)

Species reactivity

- human

- species similarity:
- mouse - 94%
- rat - 96%
- bovine - 100%
- porcine - 100%

Product Information

- >98%, by SDS-PAGE quantitative densitometry
- Expressed in *E. coli*
- Animal origin-free (AOF) and carrier protein-free
- Manufactured in our Cambridge, UK laboratories
- Lyophilized from acetonitrile, TFA

Reconstitution instructions

- Resuspend in sterile-filtered water at >50 µg/ml

Featured applications

- Maintenance of pluripotency in iPSC
- Cell culture media optimization and replacement of insulin in defined media

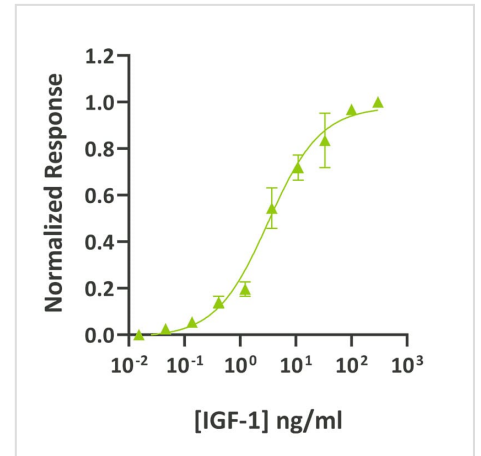
Further quality assays

- Mass spectrometry: single species with expected mass
- Recovery from stock vial: >95%
- Endotoxin: <0.05 EU/µg protein

Scientific Information

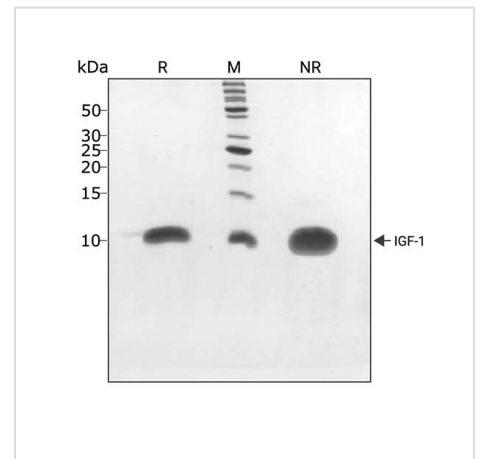
Bioactivity

IGF-1 activity was determined using the Promega serum response element luciferase reporter assay (*) in transfected MCF-7 cells. EC50 = 3.5 ng/ml (0.45 nM). Cells were treated in triplicate with a serial dilution of IGF-1 for 4 hours. Firefly luciferase activity was measured and normalized to the control Renilla luciferase activity. Data from Qk047 lot #104331. [*Promega pGL4.33\[uc2P/SRE/Hygro\] #E1340](#)



Purity

IGF-1 protein migrates as a single band at 10 kDa in non-reducing (NR) conditions and upon reduction (R). No contaminating protein bands are visible. Purified recombinant protein (3 µg) was resolved using 18% w/v SDS-PAGE in reduced (+β-mercaptoethanol, R) and non-reduced (NR) conditions and stained with Coomassie Brilliant Blue R250. Data from Qk047 batch #104331.



Original product page: <https://ryan.calliope-alpha.ts.net/product/recombinant-human-igf1-protein-qk047/>

PDF generated: 12 May 2026

Copyright © 2026 by Qkine Ltd. All rights reserved including graphics and images.