

## Recombinant human IGF-1 LR3 protein (Qk041)



**Type:** Stem cells

**Available for purchase:** Unit Size (µg): 25, 50, 100, 500, 1000

Buy online with secure credit card or purchase order.

[View this product and buy online](#)

### Product Information

---

Human insulin-like growth factor 1 long arginine 3 (IGF-1 LR3) protein is a synthetic analog of IGF-1. The substitutions include an arginine substitution and an N-terminal protein extension. Consequently, IGF-1 LR3 has improved biological potency and extended half-life. IGF-1 LR3 can be used for the consistent, reproducible maintenance of human [pluripotent](#) stem cells.

Qkine IGF-1 LR3 is a highly pure and bioactive 9 kDa protein monomer, [animal origin-free](#) (AOF) and carrier-protein free (CF).

**This protein is also available as GMP compliant [Cell Therapy Grade](#), to enquire email [ryan.weber@matriq.com](mailto:ryan.weber@matriq.com).**

### Alternative protein names

Insulin-like Growth Factor-I, Somatamedin-C, Mechano Growth Factor (MGF), IGF1, IGF 1, Qk41

### Molecular weight

9 kDa

### Protein Uniprot number

High purity human IGF-1 LR3 protein (Uniprot: P05019 for IGF-1 wild-type protein)

### Species reactivity

- human
- species similarity:

- mouse - 94%
- rat - 96%
- bovine - 100%
- porcine - 100%

### **Product Information**

- >98%, by SDS-PAGE quantitative densitometry
- Expressed in *E. coli*
- Animal origin-free (AOF) and carrier protein-free
- Manufactured in our Cambridge, UK laboratories
- Lyophilized from acetonitrile, TFA

### **Reconstitution instructions**

- Resuspend in sterile-filtered water at >50 µg/ml

### **Featured applications**

- Maintenance of pluripotency in iPSC
- Cell culture media optimization and replacement of insulin in defined media

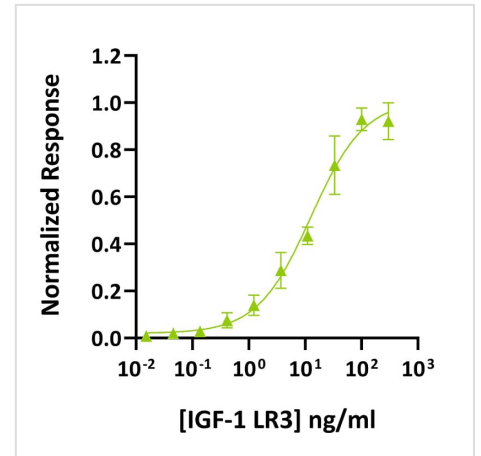
### **Further quality assays**

- Mass spectrometry: single species with expected mass
- Recovery from stock vial: >95%
- Endotoxin: <0.05 EU/µg protein

## Scientific Information

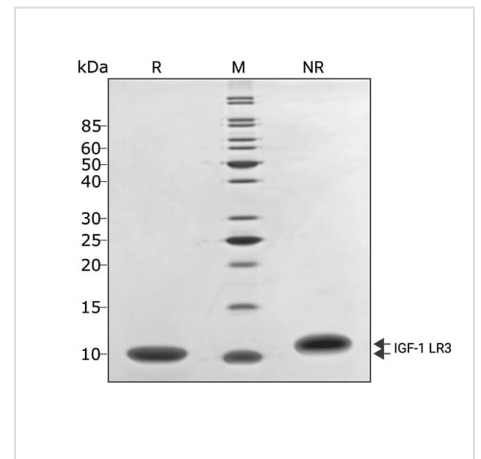
### Bioactivity

IGF-1 LR3 activity was determined using the Promega serum response element luciferase reporter assay in transfected MCF-7 cells. Cells were treated in triplicate with a serial dilution of IGF-1 LR3 for 4 hours. Firefly luciferase activity was measured and normalized to the control Renilla luciferase activity. Data from Qk041 lot #104470. EC50 12.7 ng/ml (1.4 nM).



### Purity

IGF-1 LR3 migrates as a single band at 10 kDa in non-reducing (NR) conditions and upon reduction (R). No contaminating protein bands are visible. Purified recombinant protein (3 µg) was resolved using 18% w/v SDS-PAGE in reduced (+β-mercaptoethanol, R) and non-reduced (NR) conditions and stained with Coomassie Brilliant Blue R250. Data from Qk041 batch #104315.



**Original product page:** <https://ryan.calliope-alpha.ts.net/product/recombinant-human-igf1-lr3-protein-qk041/>

**PDF generated:** 12 May 2026

Copyright © 2026 by Qkine Ltd. All rights reserved including graphics and images.